



RECP #: 752767

RECORDED 5/8/2019 AT 1:16 PM BK# 2620 PG# 1809
Debra K. Lee, CLERK OF LARAMIE COUNTY, WY PAGE 1 OF 1

STATE OF WYOMING CORNER RECORD

(In compliance with the CORNER PERPETUATION AND FILING ACT, Wyoming Statutes, 1997 Section 33-29-140, et. seq., and the Rules and Regulations of the Board of Registrations for Professional Engineers and Professional Land Surveyors)

SOUTHEAST CORNER SECTION 14, T. 18 N., R. 62 W., 6TH P.M., LARAMIE COUNTY, WYOMING

GLO: SET A FLINT STONE 20X18X5, 10 IN. DEEP, MARKED WITH 3 NOTCHES ON S. SIDE AND 1 NOTCH ON E. SIDE FOR COR. TO SEC'S 13, 14, 23, 24.

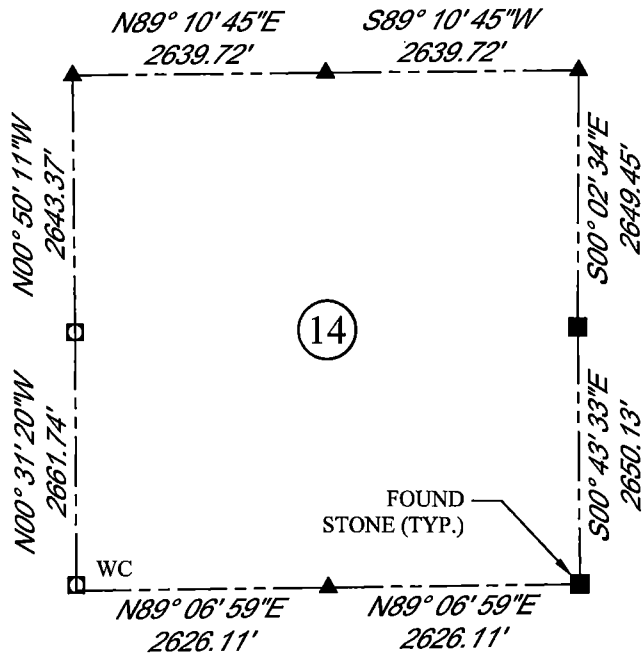
FOUND: SEMI SET STONE, APPROX. 17X18X5, STONE IS 1FT EAST OF SOUTH, WEST, AND NORTH FENCE CORNER. NO MARKINGS FOUND ON THE STONE.



SCALE: NONE

NORTH DETERMINED BY
G.P.S OBSERVATIONS

SET 3.25" ALUMINUM CAP ON
REBAR, 7 IN ABOVE SURFACE ON
SOUTH SIDE OF FOUND STONE,
STAMPED AS SHOWN.



LEGEND:

- FOUND BLM CAP
- FOUND USFS CAP
- FOUND STONE
- FOUND PRIVATE MONUMENT
- ◆ CALCULATED POSITION
- ▲ SET MONUMENT (LS10245)
- SECTION LINE

DATE OF FIELD WORK: 10/4/2018 OFFICE REFERENCE: MERIDEN

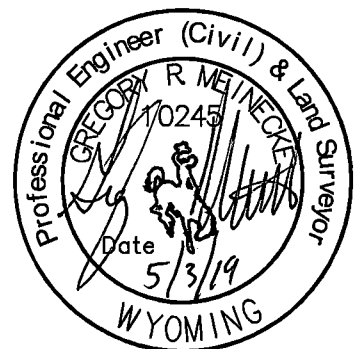
CROSS INDEX DIAGRAM

	1	2	3	4	5	6	7	8	9	10	11	12	13	14	15	16	17	18	19	20	21	22	23	24	25	
A																										
B																										
C			6		5		4		3		2		1													
D																										
E																										
F																										
G			7		8		9		10		11		12													
H																										
J																										
K																										
L			18		17		16		15		14		13													
M																										
N																										
O																										
P			19		20		21		22		23		24													
Q																										
R																										
S																										
T			30		29		28		27		26		25													
U																										
V																										
W																										
X			31		32		33		34		35		36													
Y																										
Z																										
	1	2	3	4	5	6	7	8	9	10	11	12	13	14	15	16	17	18	19	20	21	22	23	24	25	

WOOD
2615 AVIATION DRIVE
SHERIDAN, WY 82801
PH: 307-675-6400

wood.

THIS CORNER RECORD WAS
PREPARED BY ME OR UNDER
MY DIRECTION AND
SUPERVISION,
SEAL AND SIGNATURE



CORNER NAME: SOUTHEAST SECTION: 14 T. 18 N., R. 62 W. ; 6TH P.M. CROSS-INDEX # N-21
SBRPELS/PLSW: MARCH 1994; PLSW JANUARY 1998